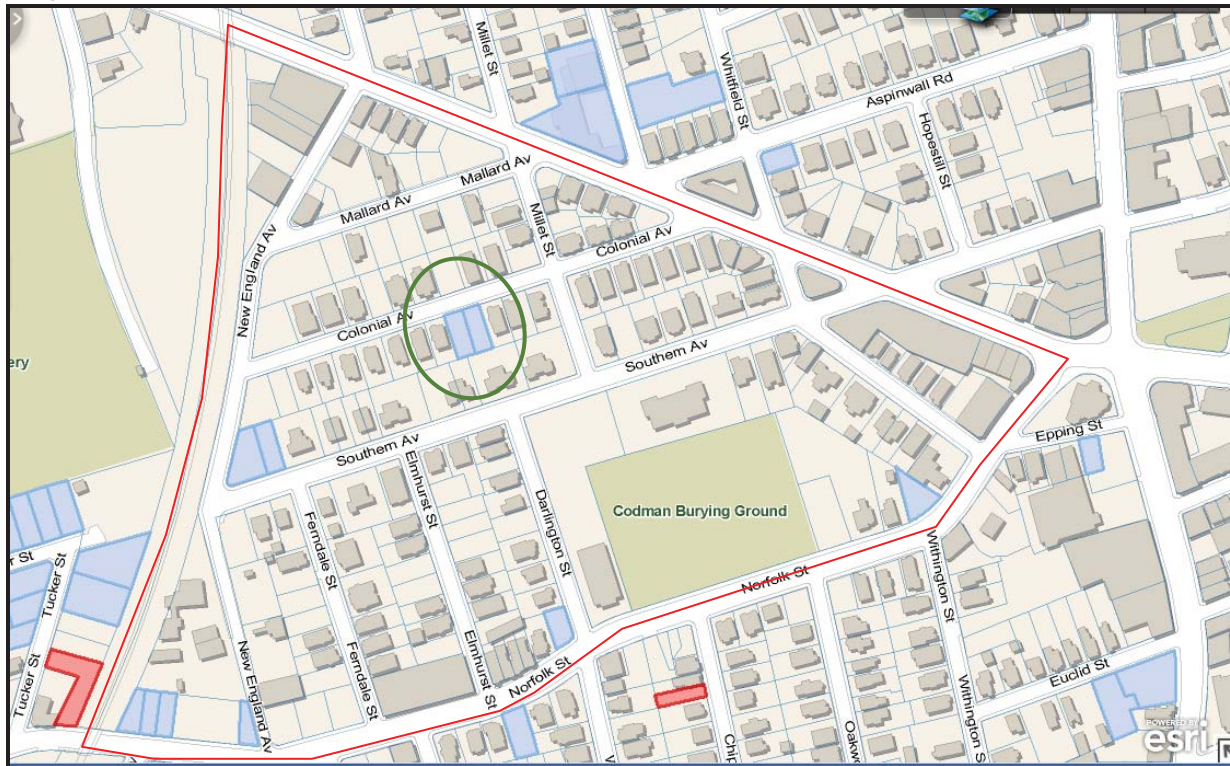


To: Prataap Patrose
Fr: John Dalzell, BRA
Date: April 28, 2014

Re: Talbot Norfolk Triangle Eco-Innovation District (TNT EID) and FIPI / Upham's Corner
Potential E+ Green Building development opportunities

Map - TNT EID Area outlined in red with DND Parcels is blue.



36-38 Colonial Ave - two parcels, each is 3,600 sf (7,200 sf total), mid block infill location with good solar orientation.

